

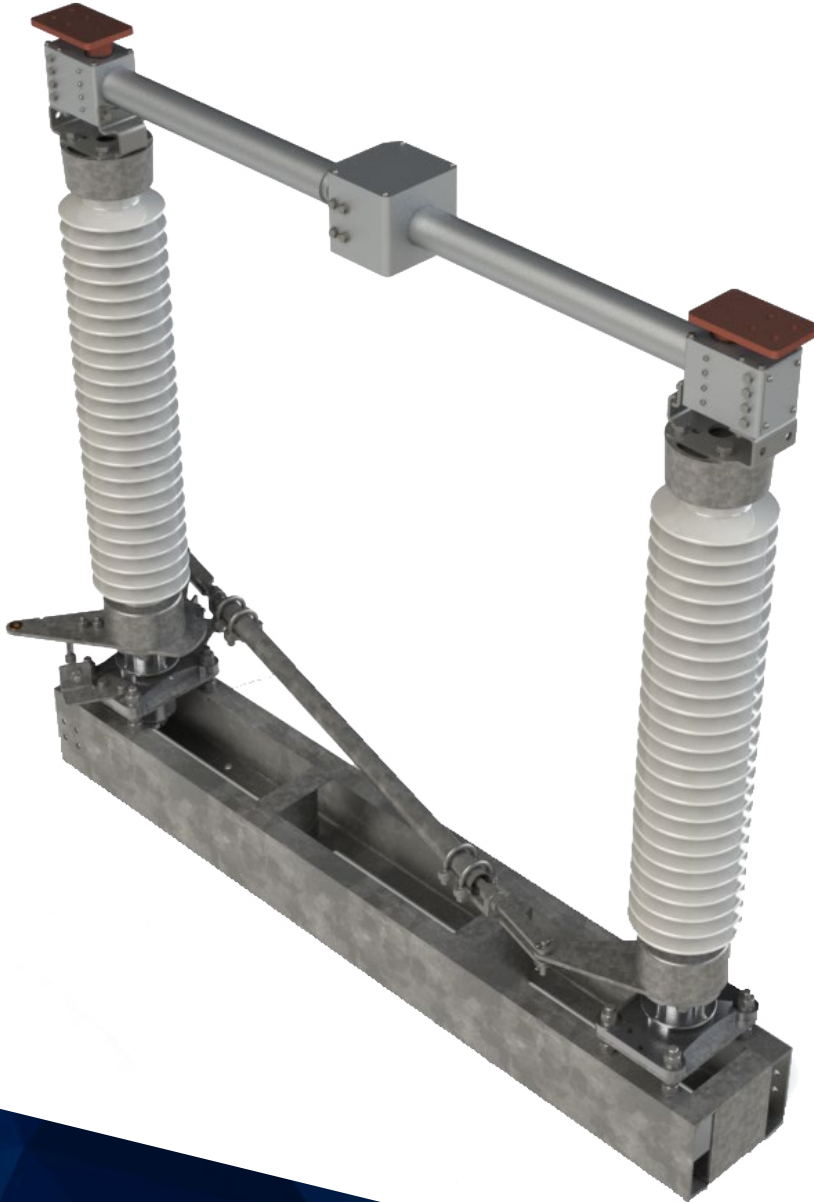


MindCore
Technologies

ACX
—

**CENTER BREAK
DISCONNECT SWITCH**

15 TO 345kV / 1200 TO 4000A



**SWITCH IN...
TO THE FUTURE**

MINDCORETECH.COM



THE MINDCORE "EDGE"

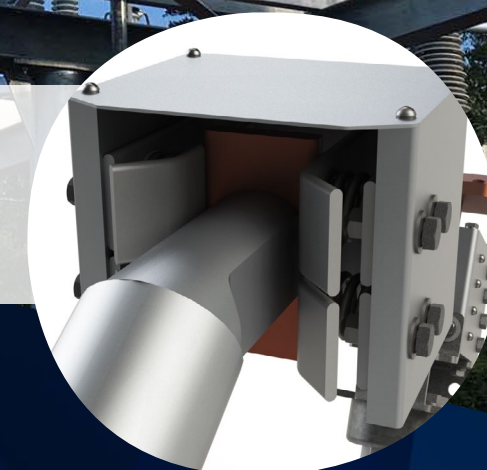
DESIGNED WITH TIME-TESTED SILVER COATED COPPER CONTACTS, THE ACX CENTER BREAK IS A **LOW COST** DISCONNECT SOLUTION.

THE CURRENT CARRYING PATH IS **BRAIDLESS** AND ASSURES PRESSURE WITH THE CONTACT FINGERS FOR MAXIMUM **CONDUCTIVITY** OVER TIME.

THE ACX PERFORMS VERY WELL UNDER ICED CONDITIONS; IN CLOSED POSITION, BOTH MALE AND FEMALE CONTACTS ARE **PROTECTED FROM ICE** AND IN THE OPEN POSITION, ONLY THE MALE ONE IS EXPOSED, EASILY **BREAKING** THROUGH WITH THE CLOSING ACTION.

THE ACX CAN BE CONTROLLED BY OUR EHTI **SMART OPERATOR** FOR REAL-TIME MONITORING.

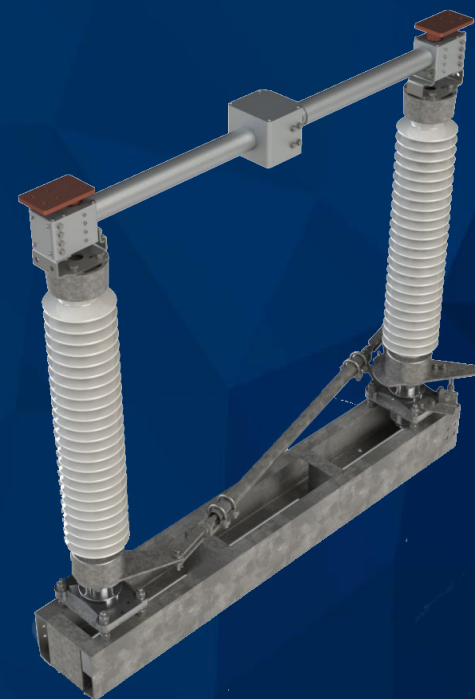
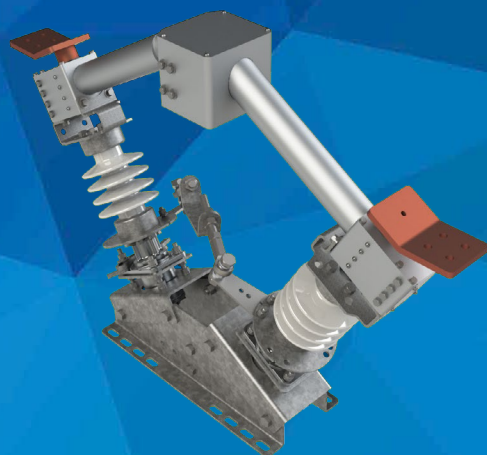
THE ACX CENTER BREAK DISCONNECT IS ALSO AVAILABLE IN **"V" CONFIGURATION**, PERFECT FOR LOW PROFILE SUBSTATION INSTALLATIONS.



BUILT TO LAST!

DISCOVER OUR TOP-OF-THE-LINE CENTER BREAK DISCONNECT SWITCH, THE **ACX**, PART OF THE NEW GENERATION OF HIGH QUALITY AND ULTRA **ROBUST** PRODUCTS DESIGNED BY MINDCORE TECHNOLOGIES.

BUILT TO UTILIZE THE HIGH STRENGTH AND LIGHTWEIGHT CHARACTERISTICS OF ALUMINUM ALLOY, THE ACX SWITCH IS VIRTUALLY **MAINTENANCE-FREE**, PROVIDING A DISCONNECT SOLUTION THAT WILL MAXIMIZE YOUR INVESTMENT FOR DECADES!



PRODUCTS FEATURES

- 15 TO 345kV / 1200 TO 4000A
- FULL COPPER VERSION AVAILABLE
- SILVER-TO-SILVER SELF-WIPING CONTACTS
- BRAIDLESS ALUMINUM CURRENT CARRYING PARTS
- REVERSED LOOP DESIGN ON HINGE AND JAW SIDES
- WEATHER RESISTANT HINGE ROTATING CONTACTS
- HORIZONTAL AND VERTICAL MOUNTING THROUGH 245KV
- RIGHT CONTACT PRESSURE FOR MAXIMUM SHORT-CIRCUIT WITHSTAND



Catalogue Number	Rated Maximum Voltage kV RMS	Rated Lightning Impulse kV Peak	Rated Continuous Current A	Withstand Short-time Current kA	Terminal to Terminal Length in (mm)	Terminal Pad Height in (mm)	Width in (mm)	Standard Mounting Holes Length*	Standard Mounting Holes Width	Weight lbs (kg)
ACX01512	15.5	110	1200	63	27 3/8"	20 3/8"	7 3/8"	31"	8 3/4"	164
ACX01520			2000		(695)	(524)	(194)	(787)	(210)	(74)
ACX02512	27	150	1200	63	30 3/8"	23 3/8"	7 3/8"	34"	8 3/4"	186
ACX02520			2000		(772)	(600)	(194)	(864)	(210)	(84)
ACX03412	38	200	1200	63	35 3/8"	32 3/8"	7 3/8"	35"	8 3/4"	234
ACX03420			2000		(899)	(832)	(194)	(889)	(210)	(106)
ACX04612	48.3	250	1200	63	41 3/8"	43 3/8"	7 3/8"	41"	8 3/4"	278
ACX04620			2000		(1051)	(1095)	(194)	(1041)	(210)	(126)
ACX07212	72.5	350	1200	63	53 3/8"	47 3/8"	7 3/8"	55"	8 3/4"	295
ACX07220			2000		(1356)	(1213)	(194)	(1397)	(210)	(134)
ACX11512	123	550	1200	63	68 3/8"	69"	7 3/8"	71"	8 3/4"	624
ACX11520			2000		(1737)	(1752)	(194)	(1803)	(210)	(283)
ACX13812	145	650	1200	63	80 3/8"	78 1/2"	7 3/8"	86"	8 3/4"	668
ACX13820			2000		(2041)	(1994)	(194)	(2184)	(210)	(303)
ACX16112	170	750	1200	63	92 3/8"	86"	7 3/8"	98"	8 3/4"	837
ACX16120			2000		(2346)	(2185)	(194)	(2489)	(210)	(380)
ACX23012	245	900	1200	63	107 3/8"	104"	7 3/8"	111"	12"	987
ACX23020			2000		(2718)	(2643)	(194)	(2819)	(305)	(448)
ACX24512	252	1050	1200	63	122 3/8"	116"	7 3/8"	128"	12"	1209
ACX24520			2000		(3108)	(2947)	(194)	(3251)	(305)	(548)
ACX34512	362	1300	1200	63	140 3/8"	130 3/8"	7 3/8"	147"	12"	1304
ACX34520			2000		(3565)	(3306)	(194)	(3734)	(305)	(592)